



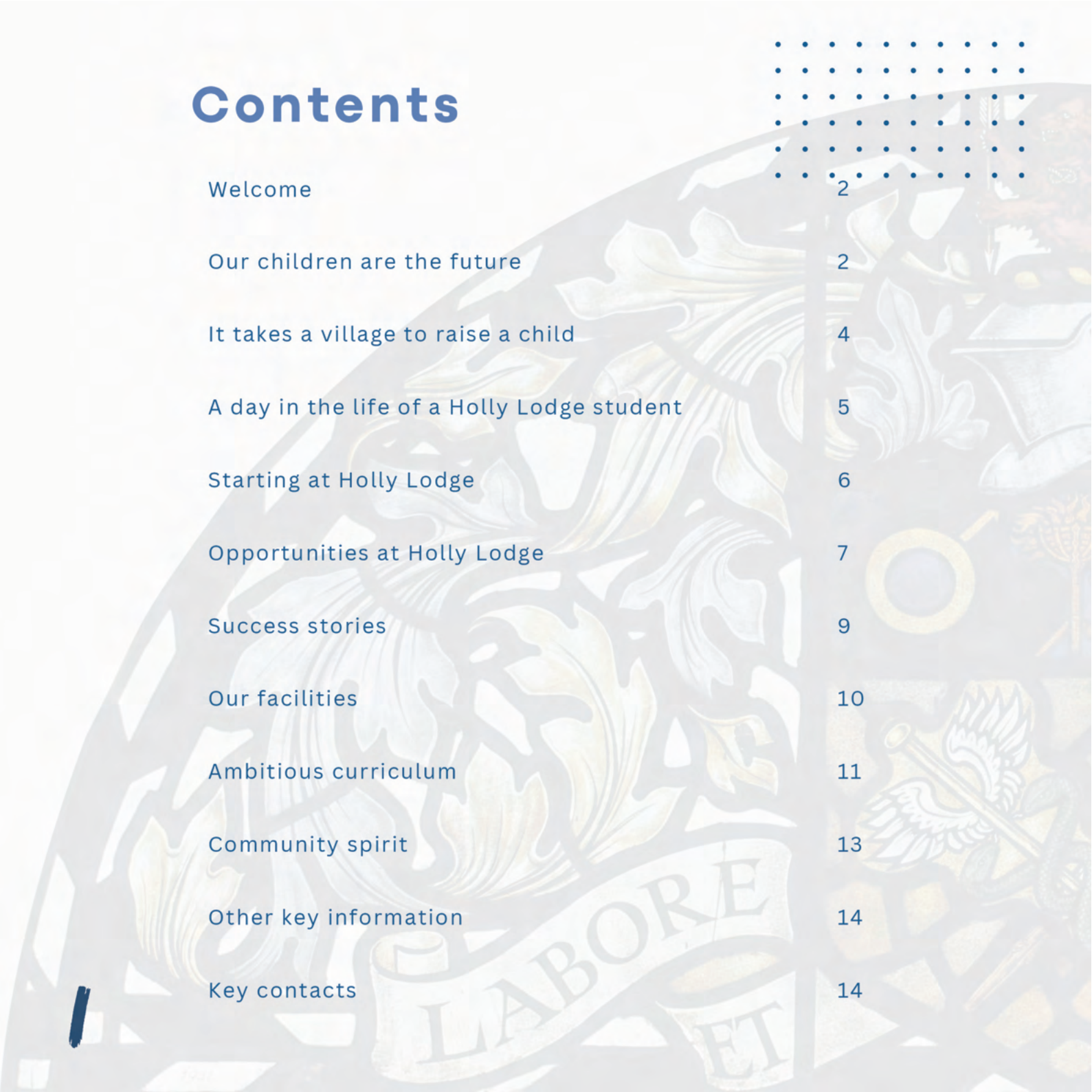
HOLLY LODGE HIGH SCHOOL PROSPECTUS

Ambition | Opportunity | Community

Contents



Welcome	2
Our children are the future	2
It takes a village to raise a child	4
A day in the life of a Holly Lodge student	5
Starting at Holly Lodge	6
Opportunities at Holly Lodge	7
Success stories	9
Our facilities	10
Ambitious curriculum	11
Community spirit	13
Other key information	14
Key contacts	14



Welcome

At Holly Lodge High School we believe our students deserve a world-class education so that they can achieve excellent grades and go on to the best universities, apprenticeships, careers and professions. We subscribe to traditional values of good behaviour, courtesy and smart appearance, and believe in ambition, opportunity and community. Our school is a happy, vibrant, nurturing setting and we are proud to offer an ambitious and diverse curriculum, excellent teaching, strong community links and a wealth of inspiring student opportunities.

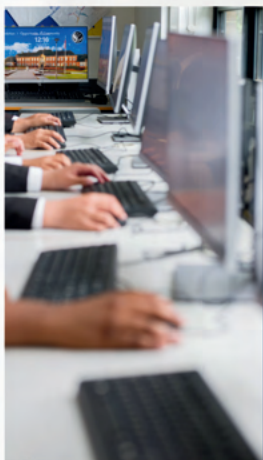


Mr Iqbal - Headteacher



Our children are the future

Every year, Holly Lodge students go on to prestigious further and higher education and training across the UK. Our alumni boast students at renowned universities studying medicine, law, mathematics, the sciences, business and accounting, engineering, psychology and sociology to name a few. We also have students pursuing ambitious and rewarding careers in construction, business, and health and social care. Our work at Holly Lodge is to ensure our students get the best possible education to prepare them for these wonderful futures – and to ensure that they are safe, happy and healthy along the way!



"The culture of safeguarding in the school is strong."
OFSTED Report - March 2022



It takes a village to raise a child

Student support and wellbeing are at the centre of what we do at Holly Lodge. From expert form tutors as a daily point of contact and support, to our dedicated SEND team, to our bespoke EAL department as well as wellbeing and safeguarding staff and our own school counsellor – our staff work with our students and families to ensure every child is well supported and nurtured at Holly Lodge. We treasure our links with our communities and the parent/carer partnership which supports our high standards and development of our wonderful young people.

A day in the life of a Holly Lodge student



A typical day in the life of a Year 7 student at Holly Lodge might look like this:

- | | | |
|-------|-------|--|
| 8.45 | Tutor | Your tutor shows the class the merit winners from last week – your form has won! You celebrate with your classmates. |
| 9.00 | 1 | Art – You walk to our studio in E block with panoramic views over the surrounding landscape. You learn how to accurately draw three-dimensional shapes from life. |
| 9.50 | 2 | Maths – You build on your knowledge of algebra to solve some multi-step equations. |
| 10.45 | Break | You walk to the library with your friends where you buy a snack and then head to the Year 7 quad where you chat with your friends. |
| 11.05 | 3&4 | Science – You make your way to your science lab where your teacher shows you how to use a Bunsen burner safely. You use this new skill to conduct a practical experiment showing the effects of heat on a solid – you can explain this using the particle theory you learnt last lesson. |
| 12.50 | Lunch | Back to the library for food and a chat with friends, perhaps football on the field or some quiet study. |
| 1.25 | 5&6 | PE - You practise your serves and footwork in badminton, and play your first proper game on our courts. |
| 3.10 | End | You might walk home with friends, or attend one of our extra-curricular clubs! |

Starting at Holly Lodge

Students starting in Year 7 at Holly Lodge are welcomed with a comprehensive induction programme, led by our transition lead Mrs Bray. Students, parents and carers attend a transition evening in the Summer term where you will meet your form tutor and receive a welcome pack. Students then attend a series of two induction days in the summer term, where you will experience Holly Lodge lessons, learn your way around our school site and grounds, and get to know your classmates. You may be making lifelong friendships on these days!

Students, parents and carers are supported to set up things like ClassCharts and to get prepared with uniform and equipment ready for a strong start in September. On the first day of term in September Year 7 are welcomed into school a day earlier than other year groups in order to give them a head start in getting their bearings around our school site and routines. Students are taught welcome lessons including study skills, homework and health and safety for practical subjects, and have the opportunity to practise routines around school including break and lunch times.

Throughout Year 7, our students are cared for by our fantastic Year 7 team, including their form tutor, Head of Year, and Assistant Head of Year. Our Year 7 team welcome questions from students, parents and carers at any time so please do get in touch if there is anything they can help you with!

Opportunities at Holly Lodge



EAL Black Country
Radio show

Holly Lodge students are encouraged to join in with our fantastic range of extra-curricular activities offered both before and after school. These include a wide range of sports and fitness, computing, languages, chess, video games and the arts. Additionally, all students have the chance to participate in our Combined Cadet Force offer from Year 8 onwards.



Free summer camps
for all students

We also offer an inspiring range of trips -- including residential adventure excursions, overseas trips, sporting events (participating and spectating), local community groups, national competitions, field trips, and curriculum-related excursions.

Holly Lodge students also benefit from extensive careers opportunities such as work experience, industry discussions and demonstrations, university tours, apprenticeship information and mock interviews with expert staff.

Culture day celebrations



Today's Holly Lodge students are tomorrow's leaders, and to prepare for this journey we offer extensive leadership opportunities including charity fundraising and events, our culture day, student mentoring roles, student ambassadors and student mental health roles.



When it's time for students to move on, they can take pride in their achievements and cherish the memories they've created here at Holly Lodge. Our sixth form alumni community is a great asset and we frequently welcome our alumni back for internships, celebrations and just to hear how they are getting on in their inspiring careers.

Health and Social Care opportunities



Study weekend



Success Stories



Baljodh S
Pharmacist

After completing my A Levels at Holly Lodge, I went on to University of Birmingham and graduated in MPharm Pharmacy. I am now working as a pharmacist. I am still heavily involved as a Holly Lodge Alumni and continue roles as a CCF cadet officer, and DofE Ambassador. Being motivated, proactive and seizing all opportunities has been the key to success in my journey.



Sharan S
Interpreter

After completing my A-levels at Holly Lodge, I took my degree in English Literature and Italian at the University of Leicester. In my third year I had the opportunity to go to Italy as an Erasmus student, allowing me to develop my skills and knowledge needed to become a freelance interpreter while also preparing to undertake a postgraduate degree in Translation or Interpreting in French and Italian.



Fahmeda B
Paralegal

I was a student at Holly Lodge from year 7 all the way through to sixth form. I studied Law LLB for my undergraduate studies at Aston University and I have now completed my LPC (Legal Practice course) LLM at the University of Law. It was not an easy ride however I can say I am proud of myself for getting through it. I would not be where I am without the support from my family and teachers.



Kabir K
Paramedic

I studied BSc (Hons) Paramedic Science at the University of East Anglia in Norwich. Since then, I have been working as a Newly Qualified Paramedic within the area of Cambridgeshire. Holly Lodge sixth form played a monumental role in my success today. The staff were always there to provide guidance and support enabling me to pursue my dream career.

Our facilities

We are immensely fortunate in our historic and well-equipped school site and grounds, which boast:

-  **Dedicated music facilities with practice rooms and studio**
-  **State-of-the-art computing labs**
-  **Sixth form block with common room and quiet study areas**
-  **Fully equipped science labs, art studios and technology workshops**
-  **Gym and fitness areas**
-  **Multi-Use Games Areas**
-  **Grass sports pitches**
-  **Two sports halls**
-  **Dance studio**
-  **School hall with stage and lighting**
-  **Large school library**
-  **Beautiful grounds**
-  **Historic buildings**
-  **Fully accessible site**



Ambitious curriculum

At Holly Lodge we are immensely proud of our ambitious, diverse and inclusive curriculum. Our team of expert, highly qualified teachers work extremely hard to ensure all of our students learn the very best of what has been thought, said and made, and that they are equipped to achieve excellent examination grades and take their seat at the table in the bright futures that await them.

Subjects available at Holly Lodge include:

- English
- Mathematics
- Science (Physics, Chemistry, Biology, Applied Science)
- History
- Geography
- Religious Studies
- Modern Foreign Languages (Predominantly French but we also offer qualifications in a wide range of other modern languages)
- Art
- Music
- Drama
- Design & Technology
- Hospitality and Catering
- Computing
- Physical Education and Sport
- Business Studies
- Health and Social Care
- Psychology
- Sociology
- Criminology and Law

For more information on the courses we offer please follow this link:



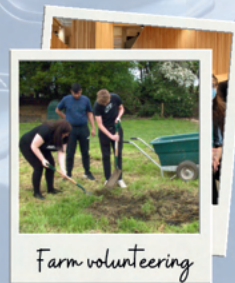
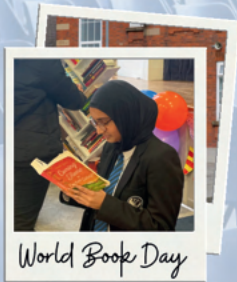
In addition to the academic and vocational curriculum, we believe in teaching students the excellent manners, soft skills and community responsibility that will open doors for them throughout their lives and help them to develop the relationships and life choices that will steer them on rich and rewarding paths, as pillars of society and leaders in their fields. Our personal development curriculum, taught both through specific sessions and our everyday interactions with students, is thus key to everything we believe in at Holly Lodge.

We believe in the role of the family and community in our ambitious work with our students, and work closely with both at every stage of our students' development. We see homework as a crucial factor in the success of our students – both in successfully learning and remembering our ambitious curriculum, and in developing good habits of self-discipline and independent study that will serve our children well in their years to come.



Community Spirit

“Leaders and governors have high ambitions for the school. They are determined to serve the local community the best way they can.”
OFSTED Report - March 2022



Other key information

Our school-home app is ClassCharts – once you are signed up you will be able to view all homework set, merits awarded and any behaviour points logged. Payment for trips is via ParentPay and for student canteen accounts payments are online or cash via our machines onsite.



Find out about our uniform and equipment here.

Key contacts

If you have any questions or would like to chat about anything, please don't hesitate to get in touch:

School reception: info@holly-lodge.org

Transition Lead, Mrs Bray: transition@holly-lodge.org



See our school website.



"Pupils study a wide range of subjects and take part in a variety of extra-curricular activities. Teachers make sure that pupils develop their knowledge and skills across the curriculum. Leaders and staff are attentive to pupils' wellbeing. They ensure that all pupils can progress and enjoy the full range of activities the school offers."

OFSTED Report - March 2022









Apply for a place here



HOLLY LODGE HIGH SCHOOL

 Holly Lane
Smethwick
West Midlands
B67 7JG

 0121 558 0691
 info@holly-lodge.org
 www.holly-lodge.org
 x.com/HollyLodge_B67

