

# Exciting News...

Holly Lodge Sixth Form welcomes a new course from September 2023. The T Level study program has limited availability for Y12 students joining for September 2023.

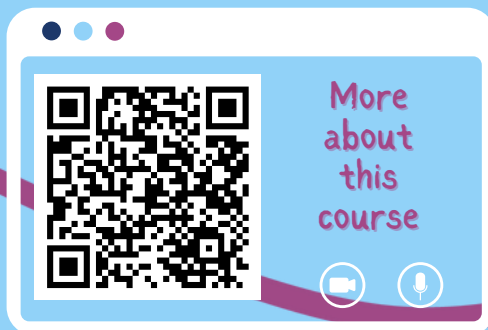
With exciting links to local childcare settings, primary schools and nurseries, this 2 year, fulltime, course promises to deliver excellent knowledge with regular, hands on experience. Giving you a head start in your chosen path of further education, higher education or early career.



What's  
a  
T Level?



Watch  
our  
video



More  
about  
this  
course

## More Information

- Holly Lane, Smethwick  
West Midlands, B67 7JG
- 0121 558 0691
- [sixthform@holly-lodge.org](mailto:sixthform@holly-lodge.org)
- [www.holly-lodge.org/sixthform/](http://www.holly-lodge.org/sixthform/)

# T Level in Education and Childcare



## Holly Lodge Sixth Form



# What is it?

## Level 3 Technical Qualification in Education and Childcare - 2 Year Course

### Entry Requirements:

9 x Grade 4-9 GCSE  
including Maths & English at G4

### Worth:

Equivalent to 3 A-Levels in UCAS points  
and can be used for university entrance

### Grading:

Students who successfully complete a T Level will receive an overall grade of pass, merit, distinction or distinction\*

.....



This T-Levels will provide you with 'threshold competence' in your chosen specialism. This means upon completion, you'll be ready to develop through work in the field or choose further study to grow your skills and achieve full occupational competence.

### Core Component areas

All students will develop an understanding of:

- the education and childcare sector from ages 0 to 19
- child development
- how to support children and young people's education
- safeguarding, health and safety and wellbeing
- understanding and managing behaviour
- observing and assessing children and young people
- equality and diversity
- special educational needs and disability
- English as an additional language
- working with parents, carers and wider families
- working with agencies and services that support children, families and carers
- reflective practice and other forms of professional development

### Specialism Option area

In addition to the core content, each student must choose one of the following specialisms:

- early years educator
- assisting teaching
- supporting and mentoring students in educational settings

### Includes 9 weeks minimum

working with an employer on an industry placement  
(21 weeks if you take the Early Years Educator specialism)

### Assessment

- Core component:
  - Paper A written examination
  - Paper B written examination
  - ESP Employer-set project (versions specific to each occupational specialism)
- Occupational specialism component:
  - Synoptic assignments (specific to each occupational specialism)

### Progression including job roles (where applicable)

Students who achieve this qualification could progress to the following, depending on their chosen occupational specialism:

- Employment
    - early years practitioner
    - early years educator
    - education technician
    - primary/secondary/tertiary teaching and support assistant
    - learning mentor
    - student engagement officer
  - Higher education
- .....