

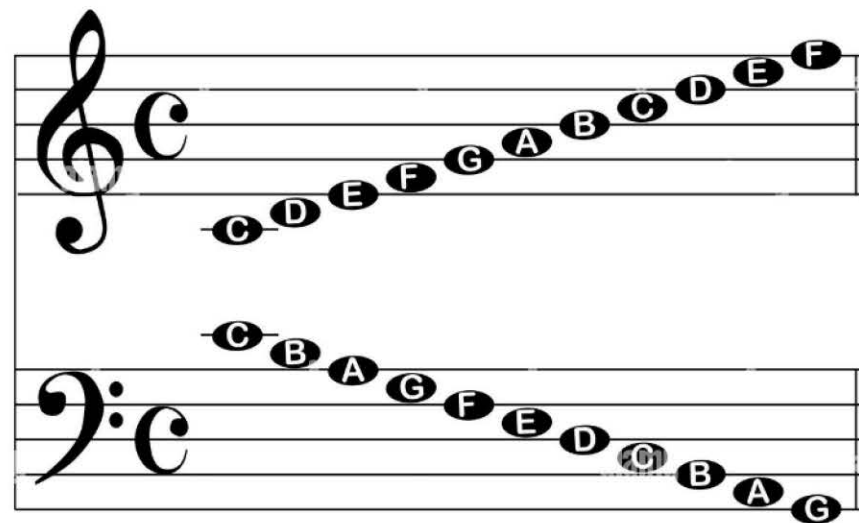


Music 100% Sheet Year 8 Spring Term

Key Words:

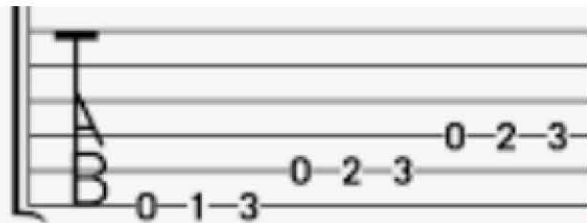
- Riff
- Ostinato
- Tablature
- Fret
- Plectrum
- Chord
- Inversion
- Pitch

Know the spellings and definitions of each keyword in the keywords list.



Notes on the treble and bass clef stave

Posture when playing the guitar- guitar facing outwards not flat. No thumbs coming around the neck. Left hand fingers curved not flat.



Decoding Guitar Tablature and using it to write your own music down. Horizontal lines represent strings and numbers represent frets. To be read left to right.

Posture when playing the keyboard- wrist and hand straight, fingers curved not flat. Same for both hands.

